

*Hubble
Bisbee*

CHRISTIE'S
INTERNATIONAL REAL ESTATE



ROCKLAND RIDGE
6702 FAIRFORD LANE



LOCATIONS

2330 W Joppa Road, Suite 104
Lutherville, MD 21093

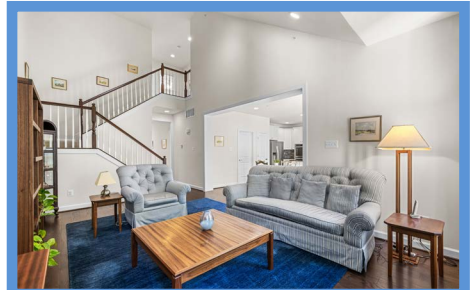
181 Harry S Truman Pkwy Ste 200
Annapolis, MD 21401

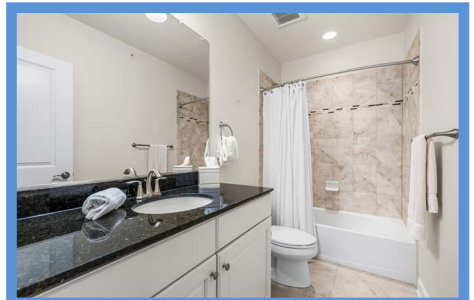
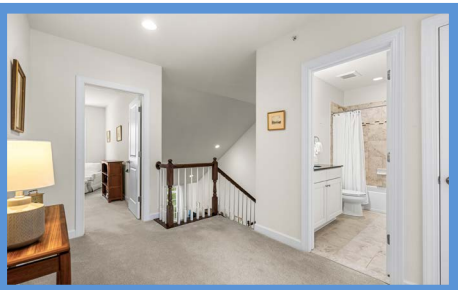
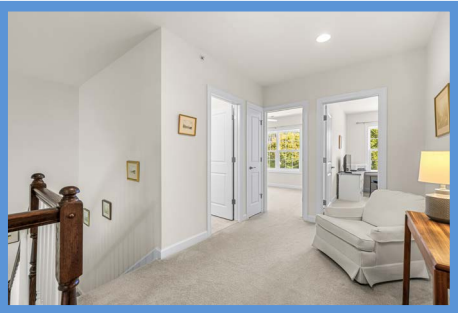


KAREN HUBBLE BISBEE

Principal, Associate Broker, ABR, GRI
Karen@HubbleBisbee.com
443-838-0438 (Mobile)
410-321-1411 (Office)

WWW.HUBBLEBISBEE.COM | (410) 321-1411 (OFFICE) | 





FOYER 10'0" X 6'7"

- Glazed entry door with transom, sidelight and silhouette shades
- Hardwood flooring
- Window
- Powder Room with pedestal sink, oval mirror with overhead lighting, Kohler flush and exhaust fan
- Closet
- Wide cased portal to Dining Room

DINING ROOM 12'5" X 10'10"

- Hardwood flooring
- Recessed lighting
- Cased portal to passage to Family Room with staircase to Lower Level

FAMILY ROOM 18'5" X 12'4"

- Vaulted ceiling
- Hardwood flooring
- Gas fireplace with colonial mantel
- Open carpeted staircase to Upper Level with hardwood handrails and painted spindles
- Two windows with transoms
- Recessed lighting
- Wide cased portal to Kitchen

KITCHEN 19'11" X 15'6"

- Hardwood flooring
- White raised-panel cabinetry including island/breakfast bar, 42" wall cabinets, pot-pan drawers, pull-out trash/recycle bins, dovetailed drawers and matching crown trim
- Granite counters
- Stone/glass tile backsplashes
- Whirlpool stainless steel refrigerator with water/ice dispenser
- Whirlpool stainless steel 5-burner gas cooktop
- Whirlpool stainless steel double wall oven
- Whirlpool stainless steel built-in microwave
- Whirlpool stainless steel dishwasher
- Stainless steel undermount double sink with Insinkerator disposal
- Breakfast area with sliding glass doors with transom to Deck
- Double window with transom at sink
- Pantry closet
- Recessed lighting
- Access to Laundry Room

LAUNDRY ROOM 7'9" X 6'8"

- Vinyl flooring
- Wall mount shelf
- Asko washer and dryer
- Fluorescent light ceiling panel
- Access to Garage

GARAGE 23'11" X 19'5"

- Two-car
- Finished
- Automatic door openers
- Electric service panel

UPPER LEVEL**HALL** 12'5" X 9'0"

- Landing for staircase with banister overlook to Family Room
- Wall-to-wall carpeting
- Linen closet
- Recessed lighting

PRIMARY BEDROOM 19'6" X 14'3"

- Wall-to-wall carpeting
- Two windows
- Recessed lighting
- Ceiling fan with lighting
- Passage to Primary Bath with large walk-in closet (10' X 8') and extra-wide double closet with 2 sets of double doors

PRIMARY BATH 12'6" X 9'3"

- Marble finish ceramic tile floor, tub platform and backsplash, shower stall walls
- Double vanity with granite top, undermount sinks, plate glass mirror, overhead lighting and mirrored medicine cabinet
- Kohler soaking tub
- Shower stall with glass door enclosure
- Kohler flush
- Window with silhouette shade
- Recessed lighting
- Exhaust fan

BEDROOM 2 12'7" X 10'2"

- Wall-to-wall carpeting
- Double window
- Double closet
- Ceiling fan with lighting

BEDROOM 3 12'6" X 9'9"

- Wall-to-wall carpeting
- Double window
- Double closet
- Ceiling fan with lighting

HALL BATH 9'4" X 4'10"

- Marble finish ceramic tile floor and tub surround
- Vanity with granite top, undermount sink, plate glass mirror, overhead lighting and mirrored medicine cabinet
- Tub/shower combination
- Kohler flush
- Recessed light
- Exhaust fan

LOWER LEVEL

- Unfinished
- Goodman HVAC unit with gas heat
- State Select gas-fired water heater
- Full-size double window and 2 additional full-size windows
- Bath rough-in
- Sump pump

EXTERIOR

- Stone fascia on front with vinyl siding
- Vinyl siding on rear
- Asphalt shingle roof
- Covered front porch
- Wood deck with vinyl railings, steps to yard and access from Kitchen
- Conveniently located in gated Rockland Run community

